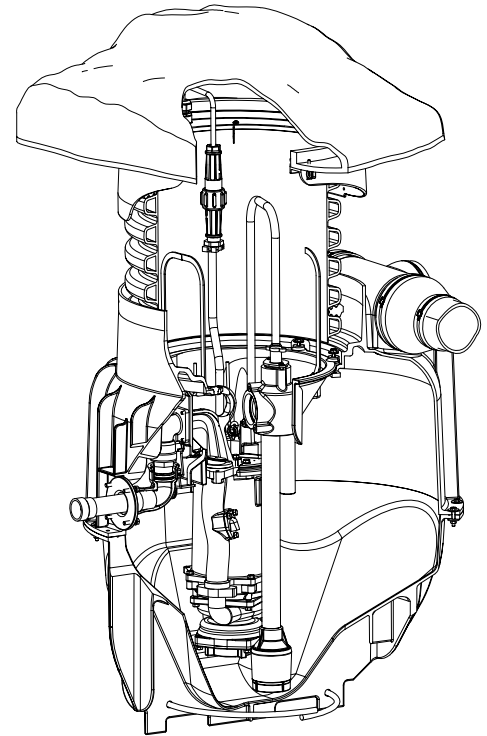


Specifications:

inches
(mm)

- BASIN** Engineered Polypropylene Copolymer, 2-piece construction, factory assembled with preformed corrosion resistant rebar installed. Includes POD for pump support and orientation
- RISER**..... HDPE 18" Dia. (457mm) corrugated drainpipe, day-of-installation adjustment sets basin depth [limit 9ft. 6inches (2.9m) to bottom of basin]
- DISCHARGE OUTLET**..... 1-1/4" NPT Flexible, stainless steel. Connects to a basin mounted bronze tank receiver.
- INLET** 3 positions, 4" (Sch 40/80 or SDR35) Flexible Inlet Flange (For Field Installation)
- COVER** Rock-Shaped Polyethylene Cover, interlocking with Riser Adapter, vented or unvented. Keyed lock included.
Load rating of 150 lb per sq ft.
- ALARM BOX**..... Model 1500 Alarm Panel, NEMA 4X
Non-metallic Enclosure with Keyed Lock, Alarm Light, Alarm Horn w/Push Button, Pump and Alarm Circuit Breakers
- DIRECT BURIAL CABLE** 12/5 Type TC, THHN, THWN Round U.L. Listed. 30ft (9m) length standard
- POWER CORD CONNECTOR**
..... Quick Disconnect, IP68 waterproof, polyamide body
- MOVEABLE DISCHARGE FITTING w/ CHECK VALVE:** (Removed with Pump)
 - Housing*..... Powder Coated Cast Iron
 - Diaphragm*..... Fiber Reinforced Neoprene
 - Flapper* Fiber Reinforced Nitrile
 - Size*..... 1-1/4" Full Port
 - Valve Seat*..... Bronze
- BALL VALVE:** Toggle actuated via polypropylene harness from top side, removable without basin entry
 - Material*..... Bronze, with Stainless Steel ball & stem, and Teflon seats
 - Size*..... 1-1/4" Full Port
- LIFTING HARNESS** 1/8" x 3/4" Polypropylene (POD). 1/2" Dia. Polypropylene (PUMP) Breaking strength 3750 lbs.
- HARDWARE** 300 Series Stainless Steel
- LEVEL CONTROL** ESPS™ – Environmentally sealed pressure switch with CPVC housing, Nitrile diaphragm, Custom molded quick connect for sealing and strain relief.
- ANTI-SIPHON** Integral to cast iron motor housing.
 - Flapper*..... Fiber Reinforced Nitrile
 - Seat*..... Valox with stainless steel rivet
- PUMP** OGP2022CE (Std), 240 Volt, 1 Phase
- OPTIONS** Direct Burial Cable lengths, Rock Cover Vented or Flood Plain, Depth, OGVF2022CE Pump, Model 1550 Alarm Panel w/Generator Receptacle



EcoTRAN™ System

For use with OGP and OGV pumps, 1/4" NPT

- Vented 52"-74" Depth **P/N: 121314-M**
- Vented 76"-114" Depth **P/N: 121315-M**
- Flood Plain 52"-74" Depth **P/N: 121316-M**
- Flood Plain 76"-114" Depth **P/N: 121317-M**



LR16567
NSF 46



CERTIFIED TO
NSF / ANSI 46



LISTED BASIN ASSEMBLY E151564 2N87
UL1951

BARNES



EcoTRAN™ System

- 1. Depth**
- 121314-M 52"-74" (1.3m-1.8m) Vented
 - 121315-M 76"-114" (1.9m-2.9m) Vented
 - 121316-M 52"-74" (1.3m-1.8m) Flood Plain
 - 121317-M 76"-114" (1.9m-2.9m) Flood Plain

- 2. Pump Type (240V / 1 Phase)**
- 2 HP OGP2022CE (STD.)
 - 2 HP OGVF2022CE

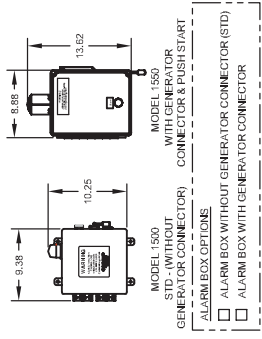
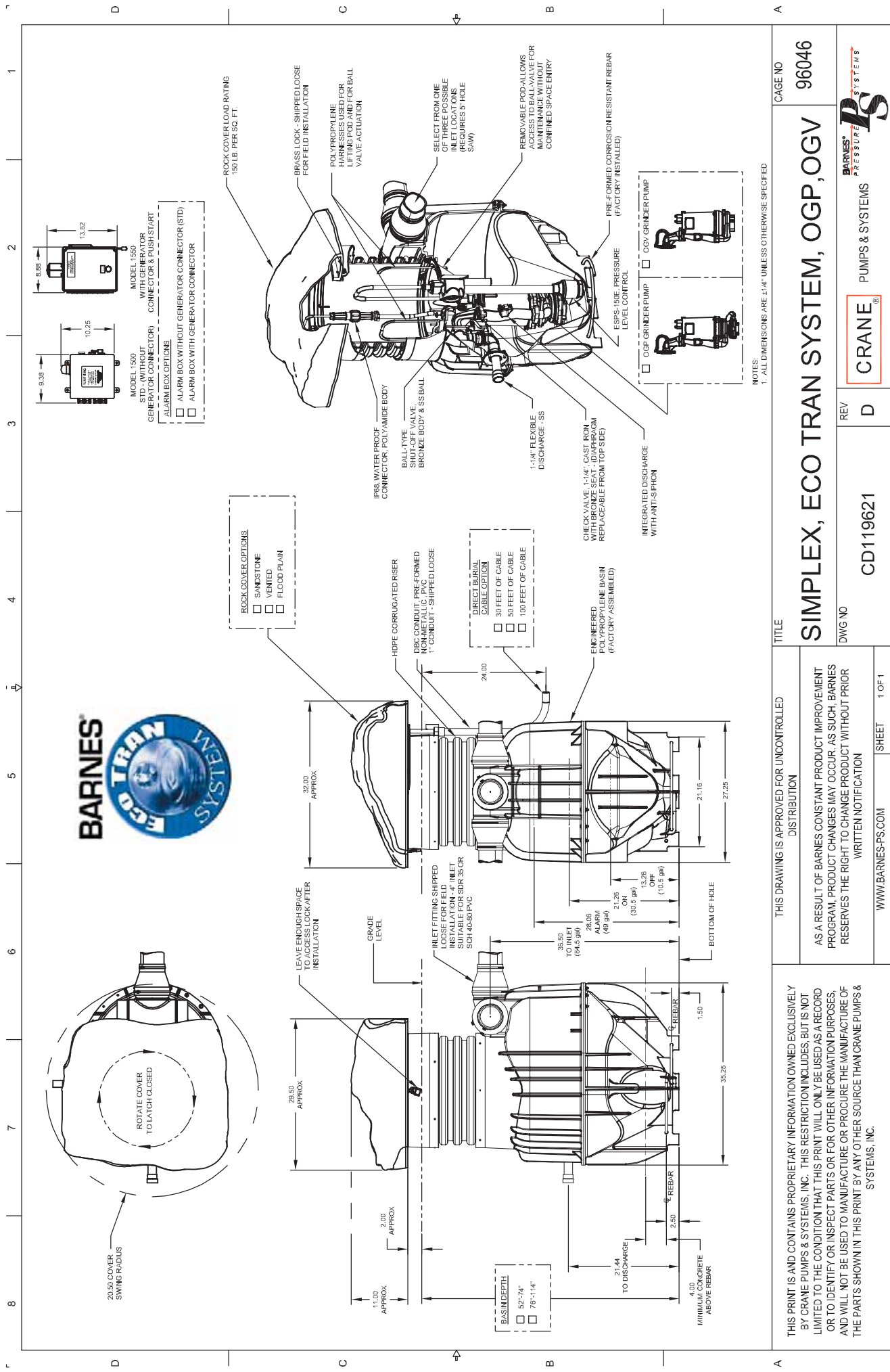
- 3. Direct Burial Cable Length**
- 30 Feet (STD.)
 - 50 Feet
 - 100 Feet

- 4. Rock Cover Options (Select One)**
- Sandstone
 - Flood Plain, Sandstone

- 5. Alarm Box Options**
- Model 1500 w/Alarm Light, Horn, Silence Button & Circuit Breaker
 - Model 1550, includes 1500 features, Plus Generator Receptacle and Automatic Transfer Switch

NOTES!

1. Unit shipped boxed complete including Basin Package, Pump, Level Control and Alarm Box (Riser shipped separately).
2. Riser depth can be shortened in the field during installation.
3. All moving parts and seals serviceable from ground level without entry into the basin.



- ALARM BOX OPTIONS
- ALARM BOX WITHOUT GENERATOR CONNECTOR (STD)
 - ALARM BOX WITH GENERATOR CONNECTOR

- ROCK COVER OPTIONS
- SANDSTONE
 - VENTED
 - FLOOD FLAIN

- BASE DEPTH
- 52"-74"
 - 76"-114"

- DIRECT BURIAL CABLE OPTION
- 30 FEET OF CABLE
 - 50 FEET OF CABLE
 - 100 FEET OF CABLE

TITLE		CAGE NO	
SIMPLEX, ECO TRAN SYSTEM, OGP, OGV		96046	
DWG NO		REV	
CD119621		D	
WWW.BARNES.PS.COM		SHEET 1 OF 1	
<p>THIS DRAWING IS APPROVED FOR UNCONTROLLED DISTRIBUTION</p> <p>AS A RESULT OF BARNES CONSTANT PRODUCT IMPROVEMENT PROGRAM, PRODUCT CHANGES MAY OCCUR. AS SUCH, BARNES RESERVES THE RIGHT TO CHANGE PRODUCT WITHOUT PRIOR WRITTEN NOTIFICATION</p>			
<p>THIS PRINT IS AND CONTAINS PROPRIETARY INFORMATION OWNED EXCLUSIVELY BY CRANE PUMPS & SYSTEMS, INC. THIS RESTRICTION INCLUDES, BUT IS NOT LIMITED TO THE CONDITION THAT THIS PRINT WILL ONLY BE USED AS A RECORD OR TO IDENTIFY OR INSPECT PARTS OR FOR OTHER INFORMATION PURPOSES, AND WILL NOT BE USED TO MANUFACTURE OR PROCURE THE MANUFACTURE OF THE PARTS SHOWN IN THIS PRINT BY ANY OTHER SOURCE THAN CRANE PUMPS & SYSTEMS, INC.</p>			

NOTES:
1. ALL DIMENSIONS ARE ±.14" UNLESS OTHERWISE SPECIFIED

